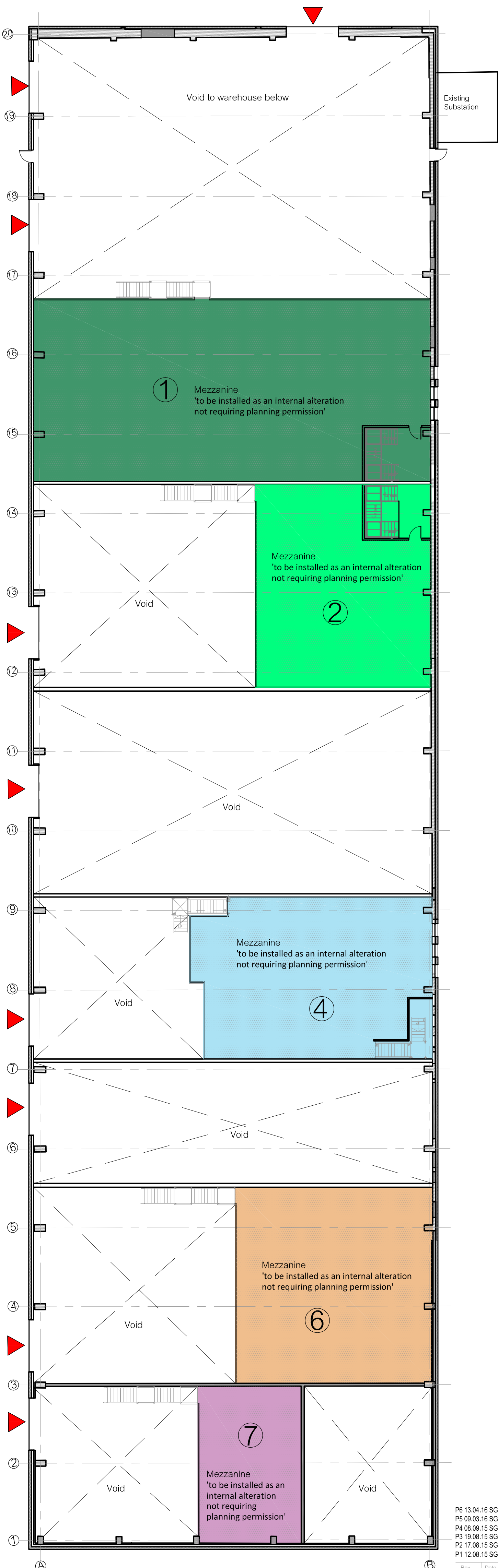
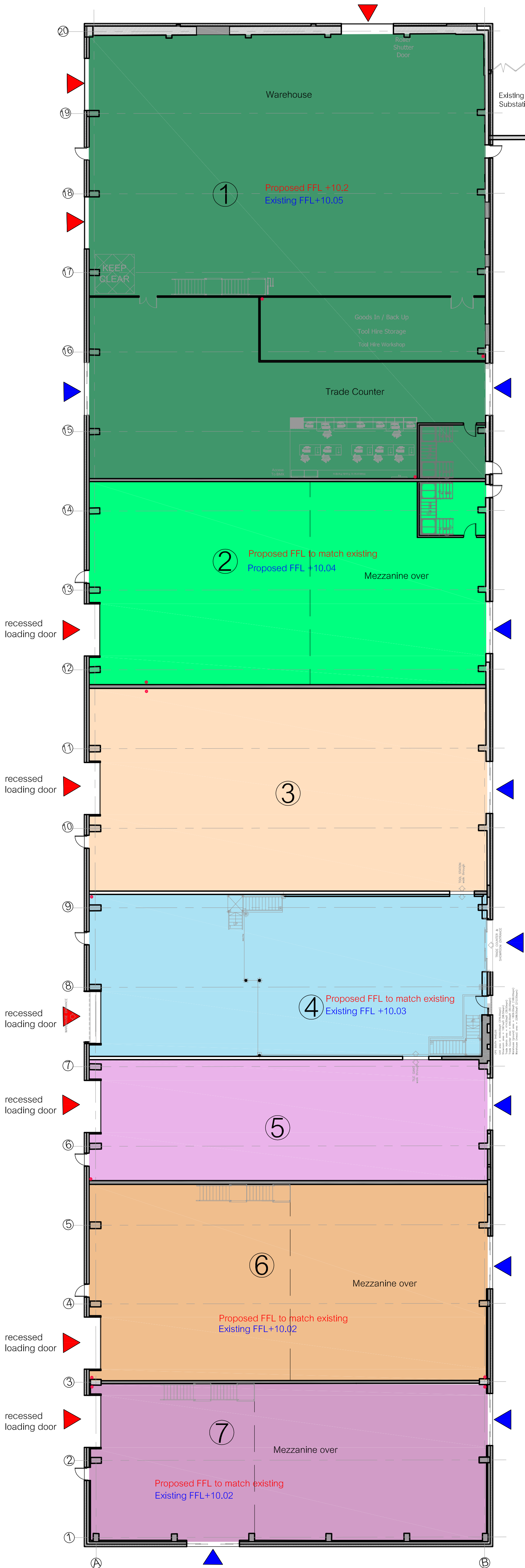
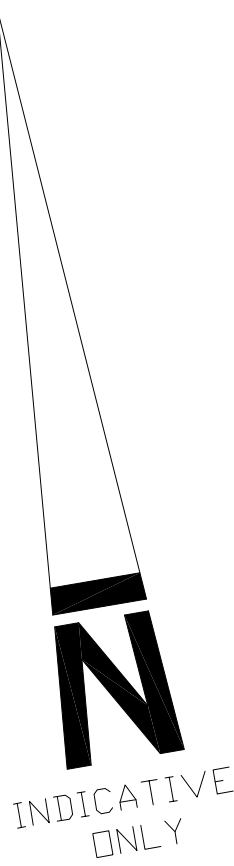


KEY	
◆	Entrance to Warehouse
▼	Entrance To Sales



P6 13.04.16 SG loading doors inset as per highways comments, Unit 8 omitted  
P5 09.03.16 SG Updates as per Iord's drawing  
P4 08.09.15 SG Updates as per Quod's comments  
P3 19.08.15 SG Updates as per clients comments  
P2 17.08.15 SG Updates as per clients comments  
P1 12.08.15 SG Updates as per clients comments

Rev. Date. Drawn.



Pera Innovation Park, Nottingham Road  
Melton Mowbray, LE13 0PB

Telephone: 01664 563 288 Fax: 01664 503 360  
E-Mail: info@hssparchitects.co.uk Web: www.hssparchitects.co.uk

Project:  
**Proposed Trade Park  
Western Approach  
South Shields**

Title:  
**Proposed Ground Floor & Mezzanine Floor  
Plan**

Scale: 1/200 Drawn: dtm Checked: Date: 14-07-2015  
Drawing No: 6962P-22 Revision: P6